

Chiang Rai One Day (Departure from Chiang Mai)



Average user rating: Not yet rated

[Write Review](#)

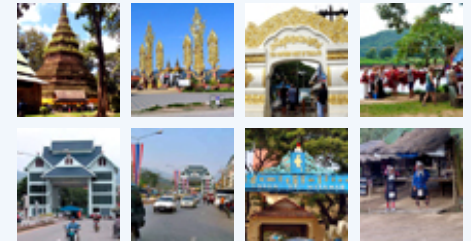
Free Discount Coupon

Tell your friend about Chiang Rai One Day (Departure from Chiang Mai)

Bookmark Chiang Rai One Day (Departure from Chiang Mai)

Print Version of Chiang Rai One Day (Departure from Chiang Mai)

View this page as PDF



[Click To View Large Image](#)

[Book Now!](#)

Chiang Rai City is older than Chiang Mai City . Almost of Chiang Rai is crossed by high mountains and is home to a lot of different hill tribes : Thai Yai , Thai Leu , Yao, Ahka etc. Interesting places are Chiang Saen a city [over 1,300 years old] Chiang Khong [Laos border] , Mae Sai [Myanmar border], Golden Triangle. We will pick you up from your hotel between 7.00-7.15 am.

Then take a minibus to Chiang Rai, stop at a hot spring for about 15 minutes to relax. Then we will go to Chiang Saen ancient city. After that we will go the Golden Triangle (This is the frontier between Laos, Myanmar and Thailand and is separated by the Mekong and Sai Rivers).

We will have a buffet lunch at Mae Sai. Mae Sai is located at the border between Thailand and Myanmar. This border town has a big market for shopping and the reasonable price of most goods reflects their origin from China, transported down the Mekong River At the end of this program we will visit the Yao and Akha hilltribes, and learn about their life.

Include features

- Lunch
- Tour Guide (TAT License)
- Insurance
- Transportation



Why choose Hotels2Thailand.com?

- ▶ 24/7 Customer Support
- ▶ Charity Campaigns
- ▶ Get Promotions and Benefits
- ▶ Free Discount Coupons
- ▶ Secure Website
- ▶ Competitive Rates Guarantee
- ▶ Quick Response Time
- ▶ Wide Products Ranges
- ▶ Privacy Policy
- ▶ Expertise for Travel in Thailand

[Book Now](#)

[Photo Gallery](#)

[Traveler Reviews](#)

[Why Us?](#)

[Contact Us](#)

To change the currency, click on the flag below:



1.) View Rate Condition

Title	Period	1 Persons Up	Child	Thai Baht
Chiang Rai One Day	Apr. 1, 08 - Dec. 31, 09	684	344	

2.) Select Trip Period

Trip Period

07:00 - 20:30

3.) Select Your Date

Trip Date:

4.) Select Number of People in Your Trip

Adult (age 12+):

Children (0-12)

Remarks

- Rates are **EXCLUDED** of Tax and Service Charge.
- All above rates are nett and quoted in Thai Baht per person.
- Show Schedule is subject to change without prior announcement
- **Join Tour** : Itinerary is fixed. Pick up time and start time is flexible upon traffic and weather condition (+/- 15 mins, depending on traffic)
- **Price Included** : Pick up and drop off from Hotel in Chiang Mai Old city and Night Bazaar area, all admission fee as in the itinerary, English speaking
- **Price Excluded** : Transfer, Personal expenses, optional tour, tips for driver and etc.
- The above rates for children are for those heights are between 120 - 140 cms. Any children under 120 cms. are free of charge.
- **Free !!.**: Transportation Airport, Train Station, Bus Station for Reservation 3 Tour.
- **Time Start** : 7.00 AM. - 20.30 PM.
- **Dropping time can not confirmable. It depends on situation and traffic.**



Online chat with our staff.

Your Booking List

List is empty.

Hotels Quick Search**Recently Viewed Items**

- Kosit Hill Hotel Phetchabun
- Maethanedol Resort Khao Khor Phetchabun
- The Imperial Phukaew Hill Resort Phetchabun
- Khao Khor Valley Resort Phetchabun
- Phukaew Resort Khao Khor Phetchabun
- Khaokor highland Resort Phetchabun
- Banphunao Resort Khao Khor Phetchabun
- Khaokho Talaypu Phetchabun
- Forest Hill Resort Khao Khor Phetchabun
- Kosa Hotel Khon Kaen
- Pocomo Resort Phetchabun
- Kaen Inn Hotel Khon

All Day Trips in Chiang Mai

- | | | | |
|---|--|---|--|
| • ATV Chiang Mai (Departure from Chiang Mai) | • Chiang Rai & Karen Long Neck (Departure from Chiang Mai) | • Chiang Rai One Day (Departure from Chiang Mai) | • Doi Inthanon National Park (Departure from Chiang Mai) |
| • Flight of the Gibbon (Departure from Chiang Mai) | • Handicraft Village Sankampaeng (Departure from Chiang Mai) | • Khantoke Dinner Khum Khantoke (Departure from Chiang Mai) | • Khantoke Dinner Old Chiang Mai Cultural Center (Departure from Chiang Mai) |
| • Mae Ping River Cruise Sight Seeing Tour 2 Hours (Departure from Chiang Mai) | • One Day Elephant Safari Tour (Departure from Chiang Mai) | • One Day Karen Long Neck (Departure from Chiang Mai) | • Trek Tour One Day Sanpatong (Departure from Chiang Mai) |

[Back To Top](#)**All Hotels in Chiang Mai**

- | | | | |
|---|--|-------------------------------------|--|
| • 3B Boutique Bed & Breakfast Hotel Chiang Mai | • Amari Rincome Hotel Chiang Mai | • Angkhang Nature Resort Chiang Mai | • Arun Tara Hotel Chaing Mai |
| • At Nimman Conceptual Home Chiang Mai | • At Pingnakorn Hotel Chiang Mai | • Athitan Villas Hotel Chiang Mai | • Ayatana Hamlet & Spa Chiang Mai |
| • Baan Gong Kham Chiang Mai | • Baan Klang Doi Resort & Spa Chiang Mai | • Baan Saen Doi Chiang Mai | • Baan Singh Kham Boutique Lanna Chiang Mai |
| • Baannamping Riverside Village Chiang Mai | • Ban Sabai Spa Village Chiang Mai | • Ban Toob Hao Home Stay Chiang Mai | • Bann Tazala Exclusive Residence Chiang Mai |
| • Belle Villa Resort Chiang Mai | • Best Western Chiang Mai Hotel | • Bodhi Serene Chiang Mai | • Bossotel Inn Chiang Mai |
| • Botanic Resort Chiang Mai | • Boutique Home Chiang Mai | • BP Chiang Mai City Hotel | • Bua Saree Resort Chiang Mai |
| • Bulun Buri Resort Chiang Mai | • Buri Gallery House Chiang Mai | • C H Hotel Chiangmai | • Centara Duangtawan Hotel Chiang Mai |
| • Center Park Hotel & Service Apartment Chiangmai | • Charcoa House Bed & Breakfast Chiang Mai | • Chiang Mai Gate Hotel | • Chiang Mai Hills 2000 Hotel |

Kaen

- Charoen Thani Princess Hotel Khon Kaen
- Phuhin View Resort Phetchabun

- Chiang Mai Orchid Hotel
- De Naga Hotel Chiang Mai
- Fern Paradise Baan Suan San Sai Chiang Mai
- Gassan Lake City Golf & Resort Chiang Mai
- Hmong Hilltribe Lodge Resort Chiang Mai
- Hotel Serenity Chiang Mai
- Kaomai Lanna Resort Chiang Mai
- Lanna View Hotel Chiang Mai
- Manathai Village Chiang Mai
- Marisa Boutique Resort & Spa Chiang Mai
- Nimseeseng Hotel Chiang Mai
- Panviman Spa Resort Chiang Mai
- Pornping Tower Hotel Chiang Mai
- Raming Lodge Chiang Mai
- Royal Lanna Hotel Chiang Mai
- Rydges Amora Hotels & Resorts Tapae Chiang Mai
- Sri Ping Resort Chiangmai
- Sukantara Cascade Resort Chiang Mai
- Tea Vana Hotel Chiang Mai
- The Field Village Resort Chiang Mai
- The Imperial Mae Ping Hotel Chiang Mai
- The Rachamankha Hotel Chiang Mai
- Chiang Mai Plaza Hotel
- Downtown Inn Chiang Mai
- Fondcome Village Resort Chiang Mai
- Golden Cupids Hotel Chiang Mai
- Holiday Garden Hotel Chiang Mai
- Imm Eco Chiang Mai
- Krisdadoi Chiangmai Aprime Resort
- Le Meridien Chiang Mai Hotel
- Mandala House Chiang Mai
- Mercure Chiang Mai (Formerly Novotel Chiang Mai)
- Noble Place Chiangmai
- Parasol Inn Hotel Chiang Mai
- Prince Hotel Chiang Mai
- RarinJinda Wellness Spa Resort Chiangmai
- Royal Orchid Park Hotel Chiang Mai
- Shangri-La Chiang Mai Hotel
- Star Hotel Chiang Mai
- Suriwongse Hotel Chiang Mai
- The Chedi Hotel Chiang Mai
- The Granary Resort Chiang Mai
- The International Hotel Chiangmai
- Touch Star Resort Chiang Mai
- Chiangmai Grandview Hotel
- Dreamcatchers Bed and Breakfast Chiangmai
- Four Seasons Resort Chiang Mai
- Grand Hillside Serviced Apartment Chiang Mai
- Holiday Inn Hotel and Resort Chiang Mai
- Jirung Luxury Health Resort Chiang Mai
- Lanna Accent Boutique Villa Chiang Mai
- Lotus Hotel Pang Suan Kaew Chiang Mai
- Mandarin Oriental Hotel Chiang Mai
- Montrara Happy House Hotel Chiang Mai
- Northern Heritage Resort Golf & Spa Chiang Mai
- Ping Buri Hotel Chiang Mai
- Proud Phu Fah Resort Chiang Mai
- RatiLanna Riverside Spa Resort Chiang Mai
- Royal Princess Chiang Mai Hotel
- Sira Boutique Hotel Chiang Mai
- Studio99 Serviced Apartments Chiangmai
- Tamarind Village Chiang Mai
- The Empire Residence Chiang Mai
- The Grand Napat Apartment Chiang Mai
- The Paradise Spa Resort Chiang Mai
- Tri yaan Na Ros Colonial House Chiang Mai
- D2 Hotel Chiang Mai
- Eurasia Chiang Mai Hotel
- Gassan Khuntan Golf & Resort Chiang Mai
- Green Lake Resort Chiang Mai
- Horizon Village & Resort Chiang Mai
- Kantary Hills Chiang Mai Hotel
- Lanna Palace 2004 Hotel Chiang Mai
- Maekok River Village Hotel Chiang Mai
- Maninarakorn Hotel Chiang Mai
- Nakornping Lodge Hotel Chiang Mai
- Palm Springs Hotel & City Resort Chiang Mai
- Plumeria Home Chiangmai
- Puripunn Baby Grand Boutique Hotel Chiangmai
- Rimping Village Chiangmai
- Royalping Garden & Resort Chiangmai
- Sirilanna Boutique Hotel Chiang Mai
- Suan Bua Hotel & Resort Chiang Mai
- Tarin Hotel Chiang Mai
- The Empress Chiang Mai
- The Imperial Chiang Mai Resort Spa & Sport Club
- The Park Hotel Chiang Mai
- U Hotel Chiang Mai



Accepted Here



Hotels2Thailand.com
is a registered travel agent with the Tourism Authority of Thailand.
TAT License No. 11/3240

- [Veranda The High Resort & Spa Chiangmai](#)
- [Yaang Come Village Resort Chiang Mai](#)

[Back To Top](#)

[Home](#) -> [Thailand Day Trips](#) -> [Chiang Mai Day Trips](#) -> [Chiang Rai One Day \(Departure from Chiang Mai\)](#)

Copyright © 1996-2009 Hotels 2 Thailand .com. All rights reserved.